

Don't Dump!

- Do not dump grass clippings or pet waste into streams.
- Dispose of household hazardous waste (e.g., cleaners). In Davidson County, transport waste to 941 Dr. Richard G. Adams Drive (Mon.-Sat. 7:30a-5:00p, Sun. Noon-4:00p). In other counties, the Tennessee Department of Environment and Conservation collects waste annually. To learn the location and date for the nearest pickup, visit <http://www.state.tn.us/environment/dca/hhw/hazcoll.php> or contact Christina Treglia (615-532-9271, christina.treglia@state.tn.us).
- Recycle used oil, oil filters, and antifreeze at one of the locations listed below.

COUNTY	CITY	NAME	ADDRESS	TEL.	ACCEPTS (O=Oil, A=Anti-freeze, F=Filter)
Cannon	Woodbury	Hwy Garage	900 Old Mc Minnville Rd	615-563-4213	O
Cannon	Woodbury	Auto Express	718 W Main St.	615-563-5320	O, A, F
Cannon	Woodbury	Davenport's Service Station	335 E Main St.	615-563-8889	O, A, F
Davidson	Antioch	Jiffy Lube	520 Bell Rd	615-366-6664	O, F
Davidson	Antioch	Valvoline	1109 Bell Rd	615-731-7818	O
Davidson	Hermitage	Advance Auto Parts	4481 Lebanon Rd	615-316-9600	O
Davidson	Hermitage	AutoZone	4609 Andrew Jackson Blvd	615-872-0472	O
Davidson	Hermitage	Jiffy Lube	4125 Lebanon Rd	615-391-5066	O, F
Davidson	Hermitage	Valvoline	3423 Lebanon Rd	615-885-6651	O, A, F

Disposal locations in Cannon and Davidson Counties. (Only includes facilities in or near Stones River Watershed. Call 1-800-287-9013 for other locations.)

COUNTY	CITY	NAME	ADDRESS	TEL.	ACCEPTS (O=Oil, A=Anti-freeze, F=Filters)
Rutherford	M'boro	Advance Auto Parts	1343 NW Broad St.	615-896-0937	O
Rutherford	M'boro	Advance Auto Parts	510 SE Broad St.	615-904-7550	O
Rutherford	M'boro	AutoZone	1729 Memorial Blvd	615-893-6442	O
Rutherford	M'boro	AutoZone	230 SE Broad St.	615-890-7096	O
Rutherford	M'boro	M'boro City Center	648 W Main St.	615-893-3681	O, F
Rutherford	M'boro	Tractor Supply Co.	135 John Rice Blvd	615-896-1561	O
Rutherford	Smyrna	Advance Auto Parts	389 S Lowery St.	615-459-9064	O
Rutherford	Smyrna	AutoZone	221 S Lowery St.	615-355-6898	O
Rutherford	Smyrna	Dale's Exxon	I-24 & Almadille Rd	615-355-9940	O
Rutherford	Smyrna	Tractor Supply Co.	513 Nolan Dr.	615-459-0225	O
Wilson	Mt Juliet	Advance Auto Parts	11439 Lebanon Pike	615-754-7268	O
Wilson	Mt Juliet	AutoZone	11067 Lebanon Rd	615-773-8300	O, F

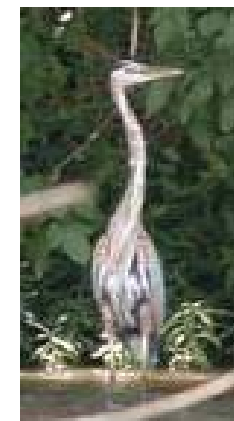
Disposal locations for oil, oil filters, and antifreeze in Rutherford and Wilson Counties. (Only includes facilities in or near Stones River Watershed. Call 1-800-287-9013 for other locations.)

HOT TIP!

To learn more about how to recycle oil, oil filters, tires, and other waste, visit <http://www.state.tn.us/environment/dca/recycle/> or contact the Tennessee Department of Environment and Conservation (888-891-TDEC or ask.tdec@state.tn.us).

Urban Streams in the Stones River Watershed:

You Can Make A Difference!



Funded by the Tennessee Department of Environment and Conservation.

Prepared by Andrea Wonnell and Mark Abolins (Middle Tennessee State University)

Animals, large and small, depend on streams for clean water, food and shelter. Turtles and a great blue heron found in Lytle Creek, Murfreesboro, TN. (A. Wonnell)



Mayfly, Riffle Beetle, Gilled Snail, Stonefly

www.epa.gov/adopt/patch/html/critters.html

You Can Help!

What is the Stones River Watershed?

It is the region from which water drains into the Stones River.

Problems Facing Urban Streams:

- Loss of aquatic life and habitat.
- Removal of trees and other near-stream vegetation.
- Increased stream bank erosion and sediment deposition within the channel.
- Dumping, littering, and runoff from roads and parking lots.

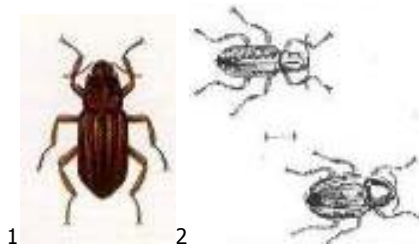
Aquatic Life in Healthy Streams:

- Pollution-Sensitive Critters indicate good water quality.
- They cannot tolerate pollution or increased water temperatures.
- Many of these critters call our urban streams home!

THERE IS AQUATIC LIFE IN YOUR NEIGHBORHOOD!

IT IS WORTH PRESERVING!

RIFFLE BEETLE



1. www.kywater.net/cleanStreams/CD/Macroinvertebrate-key/elmidad.htm
2. amrclearinghouse.org/Sub/WATERmonitoring/ZZMacroGuide.htm

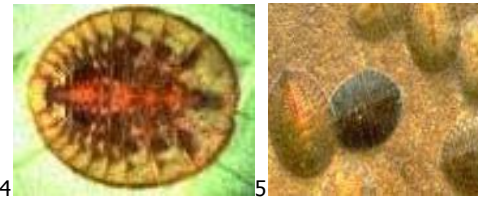
GILLED SNAIL



3

3. clean-water.uwex.edu/.../biotic/group3.htm

WATER PENNY



4

5

4. <http://www.yll.edu.hk/bio-health/bio-science-resource-others-invertebrate.htm>
5. [HTTP://WWW.UMASS.EDU/TEI/MWWP/INDICATORS.HTML](http://WWW.UMASS.EDU/TEI/MWWP/INDICATORS.HTML)

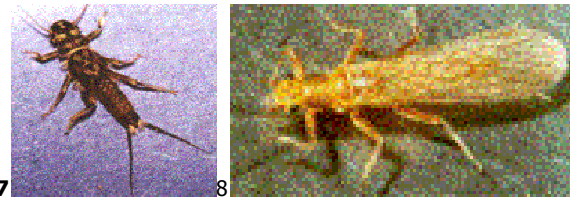
CADDISFLY LARVA



6

6. WWW.MOSTREAMTEAM.ORG/MACROINV/CADDISCASE.JPG

STONEFLY NYMPH & ADULT



7

8

7&8 [HTTP://WWW.EPA.GOV/BIOINDICATORS/HTML/STONEFLIES.HTML](http://WWW.EPA.GOV/BIOINDICATORS/HTML/STONEFLIES.HTML)

Get Informed!

Visit the Tennessee Department of Environment and Conservation, Division of Water Pollution Control at <http://www.state.tn.us/environment/wpc/>

Get Involved!

Contact Mayo Taylor (Tel.: 615-890-2081, Fax: 615-904-8531, E-mail: taylorm@mtsu.edu) at the Stones River Watershed Association to learn more about canoe trips and other fun river stewardship activities.

Don't Litter!

Trash enters streams, endangering wildlife and polluting the water.



Trash in Dry Creek, Davidson County, TN (photo by A. Wonnell)

Don't Mow the Stream Bank!

Allow native vegetation to grow on stream banks, creating habitat, stabilizing the banks, and shading the stream. Create scenic beauty in your own backyard!

Use Mulch!

Use grass clippings instead of fertilizer. The clippings break down naturally and release nutrients to feed your lawn.

Avoid pesticides/herbicides!

If you must use them, apply sparingly and only as directed. Use only during the correct time of the year.

Maintain a clean septic tank!

Waste can get into streams.

